

Public Transportation – MTR

A. From MTR Kai Tak station to Kai Tak Sports Park “KTSP”

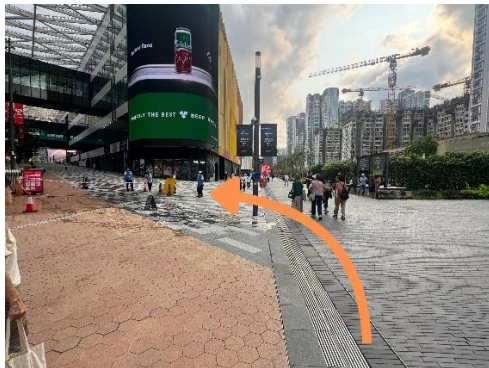
1. Leaving the station through Exit D



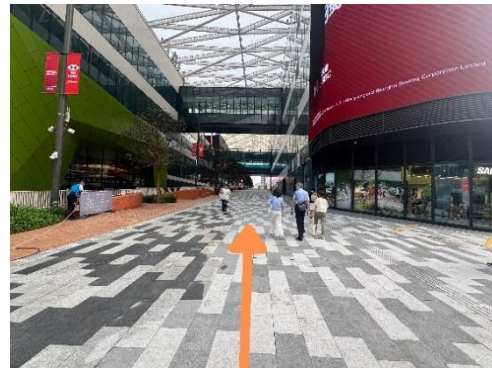
- 2.



3. Turn left



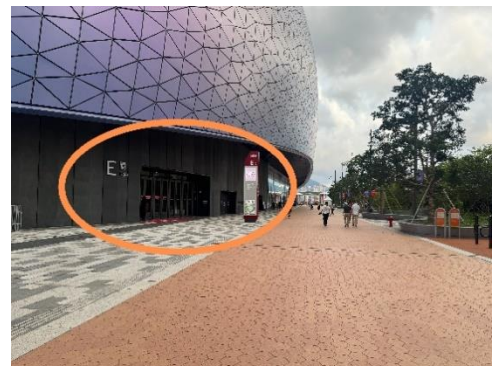
- 4.



5. Turn left toward Gate E



- 6.

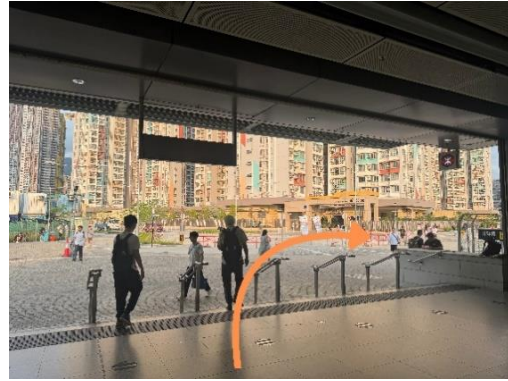


B. From MTR Sung Wong Toi Station to KTSP

1. Leaving the station through Exit D



2. Turn right



3. Turn left



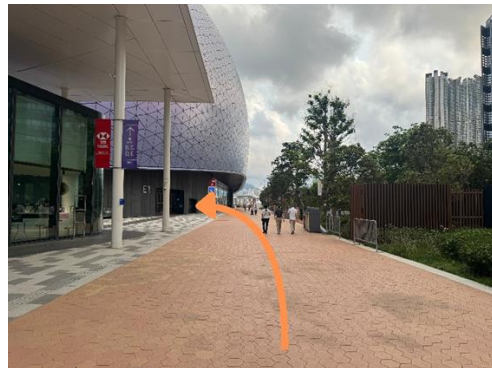
4. Turn right



5.



6. Turn left toward Gate E



Driving:

A. Stadium Parking <https://maps.apple/la/ICz1QKdi6FejAH>

1. 38 Shing Kai Road, turn left



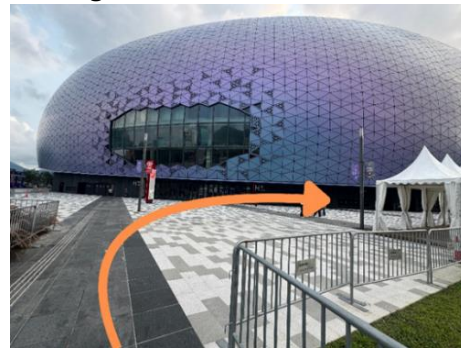
2. Take the lift in the stadium parking



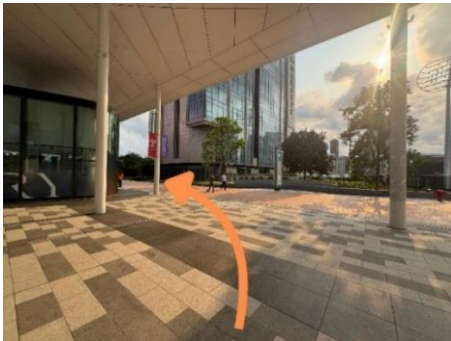
3. Take the lift to Level 2



4. Turn right



5. Turn left



6. Turn left toward Gate E

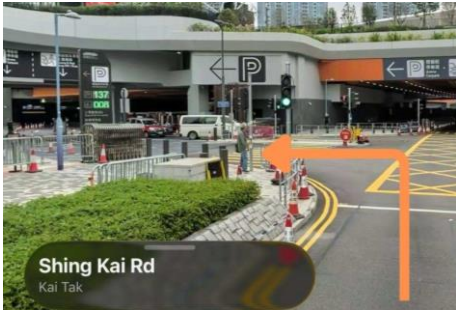


Stadium Parking fee

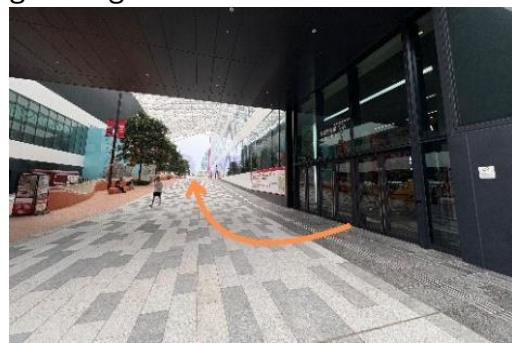
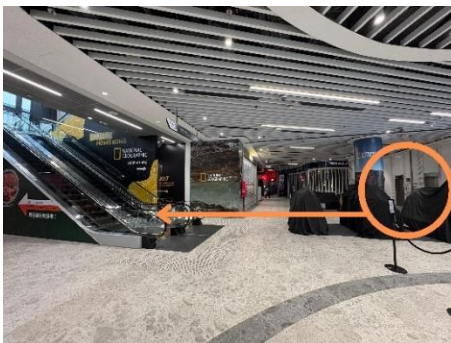
		Mon-Thu	Fri-Sun & PHs
Hourly Park	07:00 - 22:00	HK\$25 /hr	HK\$27 /hr
	22:00 - 07:00	HK\$12 /hr	
Day Park	07:00 - 19:00	HK\$120	HK\$180
Night Park	19:00 - 10:00	HK\$80	

B. Arena Parking <https://maps.apple/la/47TQwseF-MHkCW>

1. On Shing Kai Road, when you see the sign “Arena Parking”, turn left and go straight into the parking area
2. Take the lift to G/F



3. Go straight and take the escalator
4. Leave Kai Tak Mall 2, turn right and go straight



5. Turn left toward Gate E



Arena Parking fee

		Mon-Thu	Fri-Sun & PHs
Hourly Park	07:00 - 22:00	HK\$25 /hr	HK\$32 /hr
	22:00 - 07:00	HK\$12 /hr	
Day Park	07:00 - 19:00	HK\$140	-
Night Park	19:00 - 10:00	HK\$72	

By Taxi:

Stadium drop-off/pick-up point <https://maps.apple.com/?la/ICz1QKdi6FejAH>

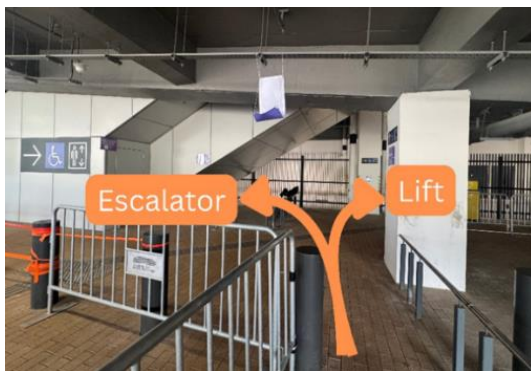
1. 38 Shing Kai Road, turn left



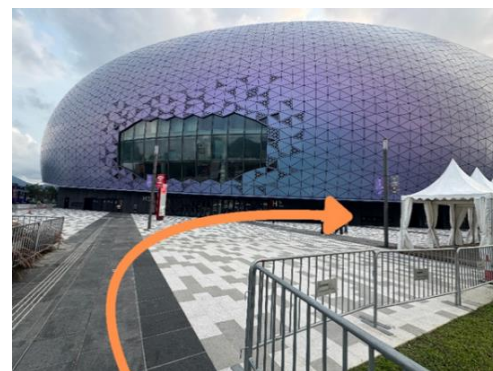
2. Drop-off/pick-up point at Stadium



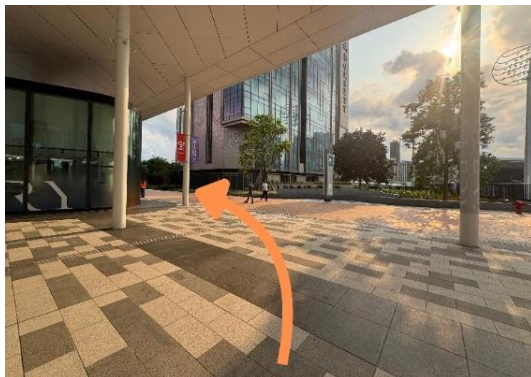
3. Turn right to the lift / Turn left to the escalator. Take lift/escalator to Level 2



4. Turn right



5. Turn left



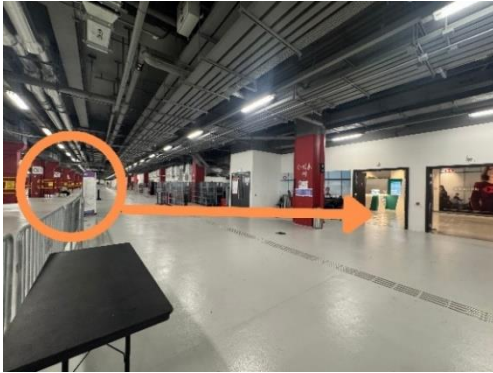
6. Turn left toward Gate E



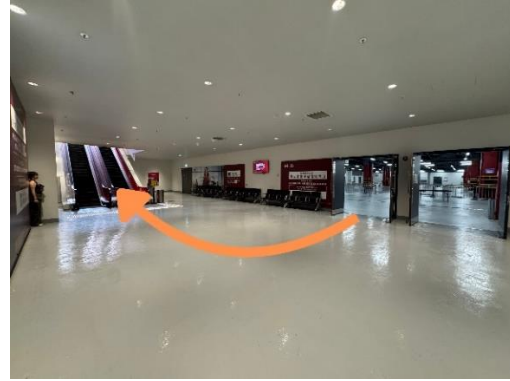
By Coach arranging by GFS

Coach drop-off/pick-up point at Stadium <https://maps.app.goo.gl/PQXWuPGtnx76W9m99>

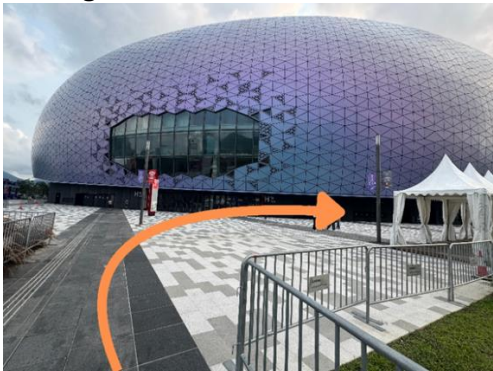
1. Drop-off/pick-up point at Stadium



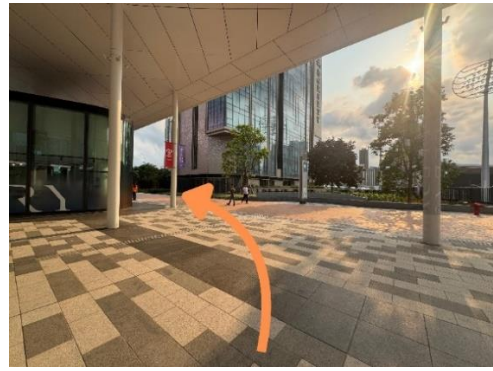
2. Walk toward to the escalator



3. Turn right



4. Turn left



5. Turn left toward Gate E

